

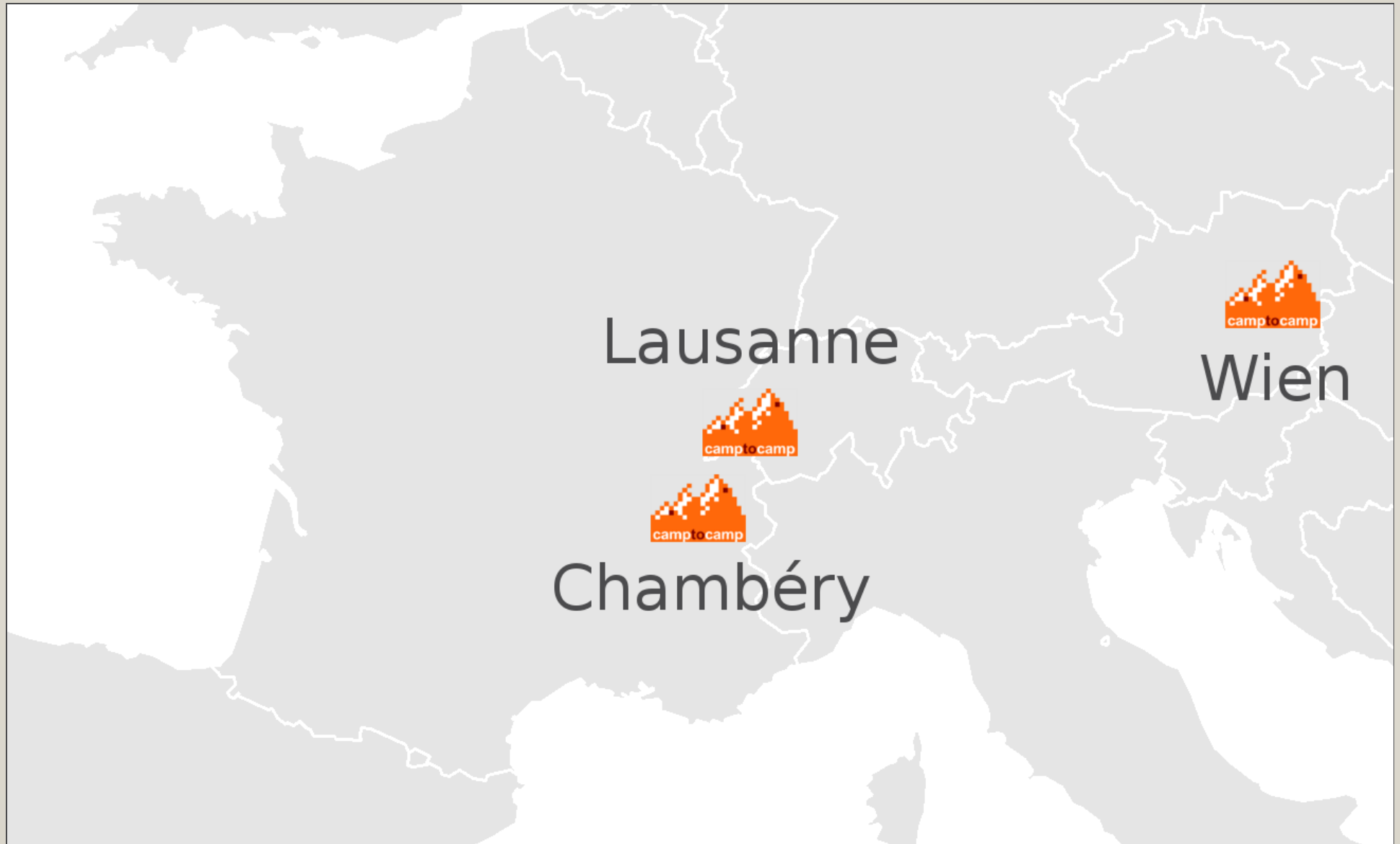
# MapFish Print 3

*Printing maps like a boss*



Tobias Sauerwein  
Camptocamp

# CAMPTOCAMP



# CAMPTOCAMP

GEOSPATIAL

BUSINESS

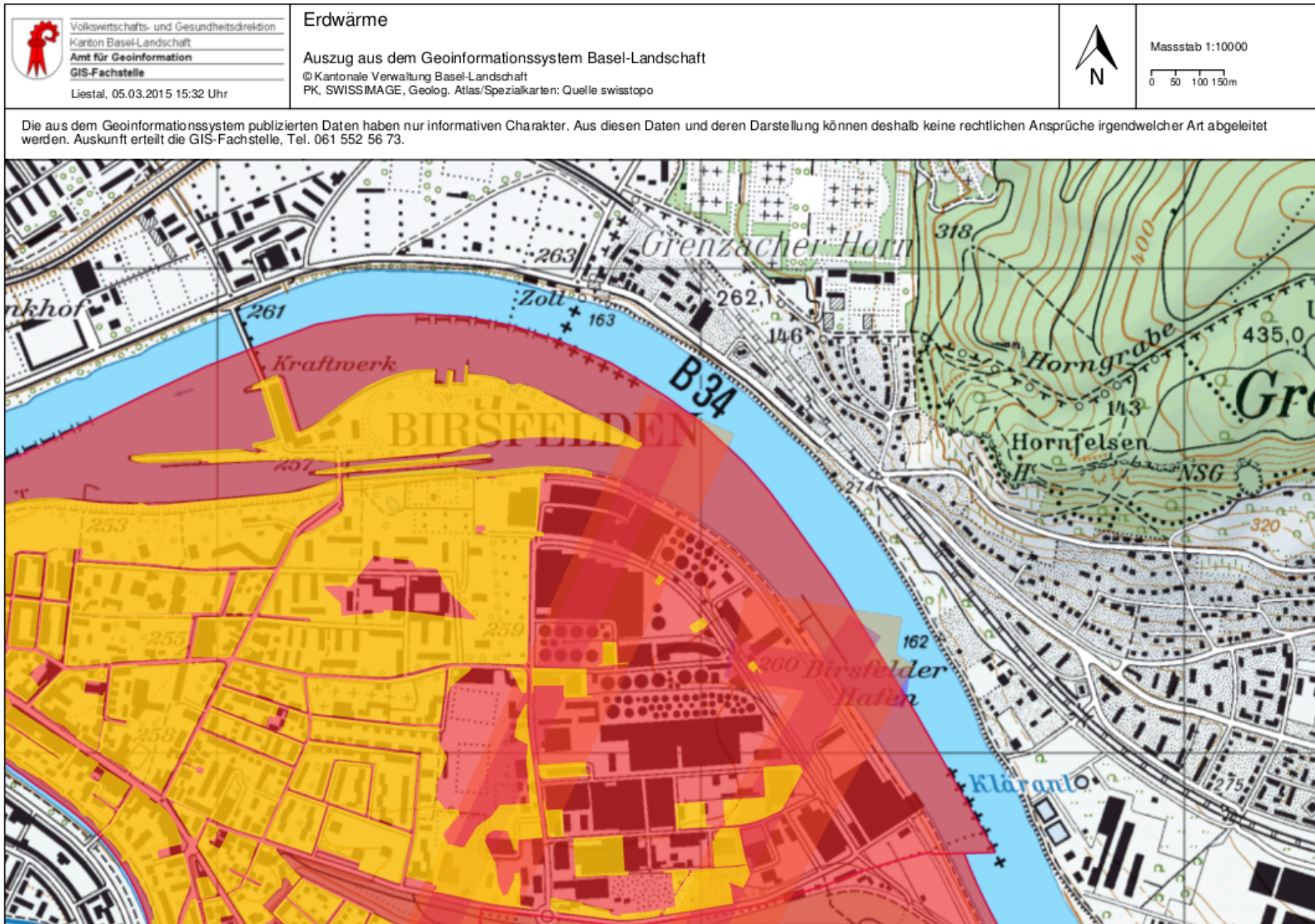
**We are  
hiring**

BERATUNG, STUDIEN,  
FORSCHUNG & ENTWICKLUNG

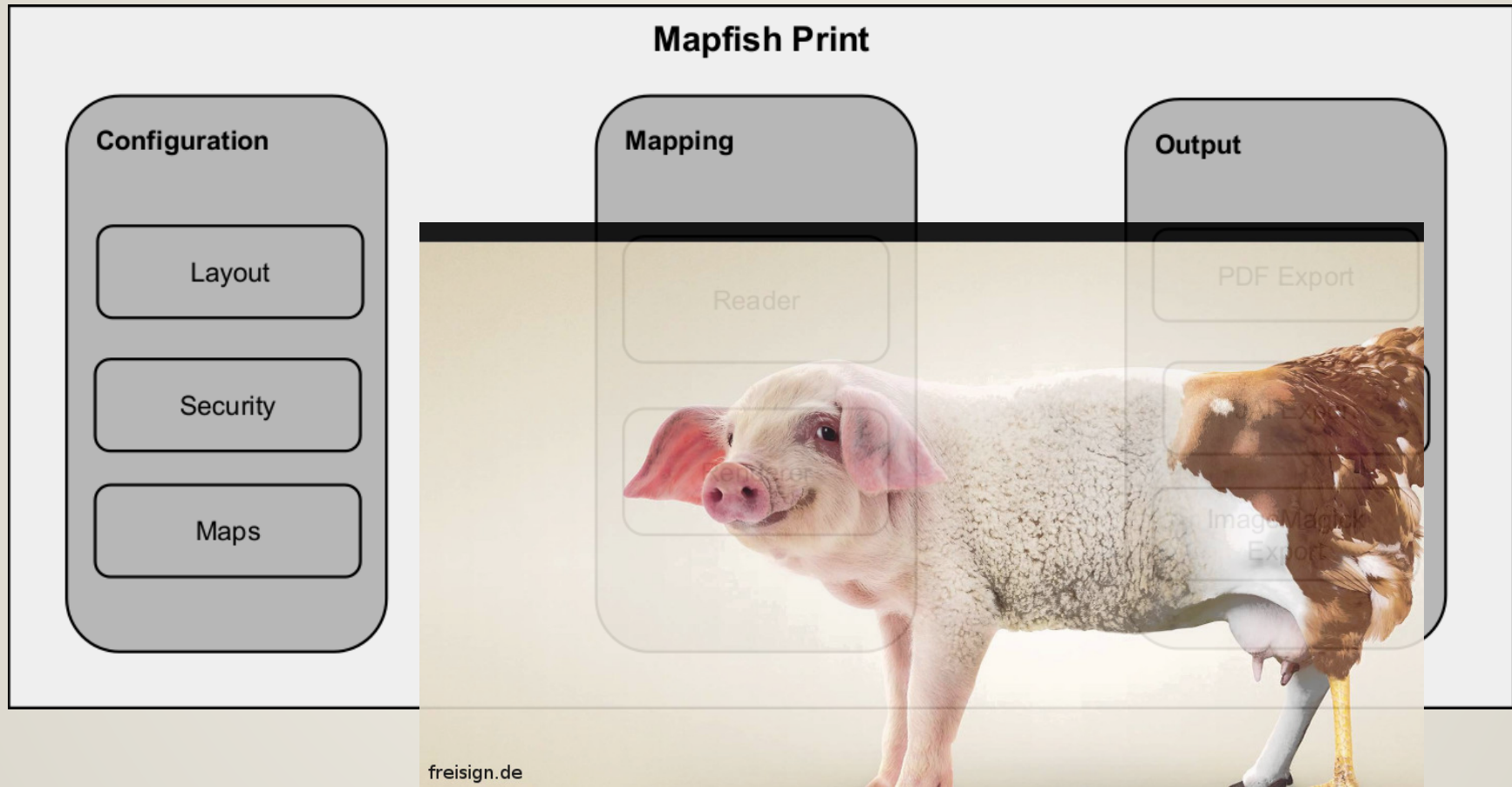
OPEN SOURCE SOFTWARE  
SUPPORT

SCHULUNG

# MAPFISH PRINT?



# THE PAST: MAPFISH PRINT 2



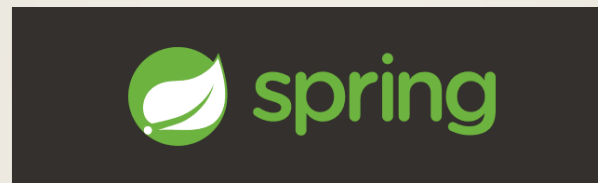
# MAPFISH PRINT 3



Mapping



Layout



Plugin Framework



**MapFish Print**

Web API / Security / Widgets

# PRINT PROCESS

```
templates:  
  A4 Portrait: !templ  
    reportTemplate: r  
    attributes:  
      title: !string  
      map: !map  
      width: 555  
      height: 730  
      maxDpi: 600  
      scalebar: !scal  
      width: 230  
      height: 40  
    processors:  
      - !reportBuilder
```

config.yaml

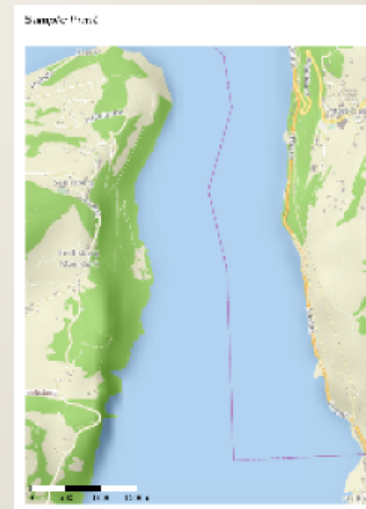
```
0 ..... 100 ..... 200  
$P{title}
```

report.jrxml

## Configuration

POST /print/simple/report.pdf

```
{  
  "layout": "A4 Por  
  "outputFormat": "  
  "attributes": {  
    "title": "Sam  
    "map": {  
      "bbox": [16  
      "projection  
      "dpi": 72,  
      "rotation":  
      "areaOfInte  
      "style":  
      "display"  
      "renderAs
```



## YAML CONFIGURATION

```
templates:  
  A4 Portrait: !template  
    reportTemplate: report.jrxml  
    attributes:  
      ...  
processors:  
  ...
```



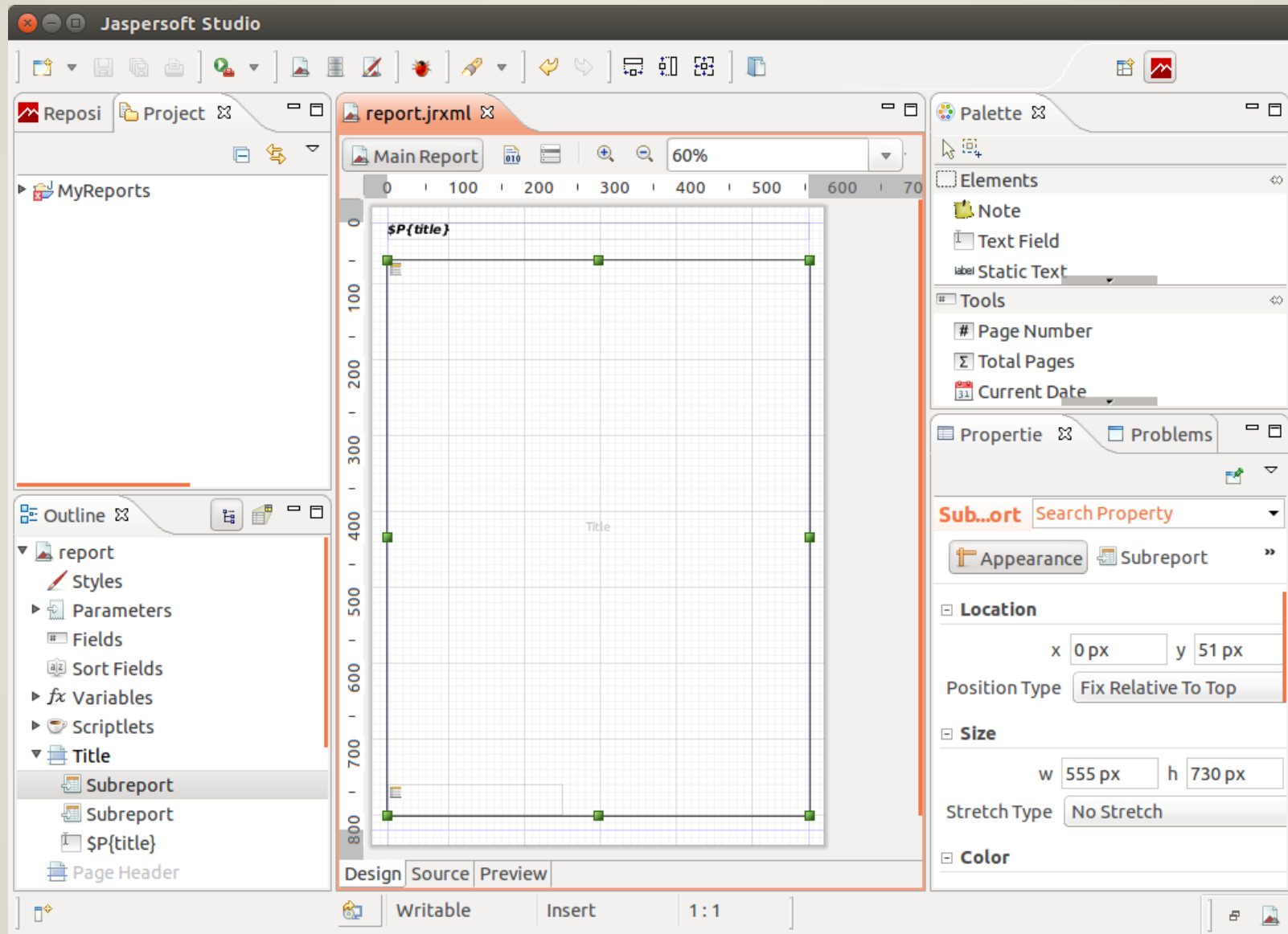
# YAML CONFIGURATION (ATTRIBUTES)

```
templates:  
  A4 Portrait: !template  
    reportTemplate: report.jrxml  
    attributes:  
      title: !string {}  
      map: !map  
        width: 555  
        height: 730  
        maxDpi: 600  
      scalebar: !scalebar  
        width: 230  
        height: 40  
    processors:  
      ...
```

## YAML CONFIGURATION (PROCESSORS)

```
templates:
  A4 Portrait: !template
    reportTemplate: report.jrxml
    attributes:
      ...
    processors:
      - !reportBuilder
        directory: '.'
      - !createMap
        inputMapper: {map: map}
        outputMapper: {mapSubReport: mapSubRepo}
      - !createScalebar {}
```

# REPORT DESIGNER: JASPERSTUDIO STUDIO




# PRINT REQUEST

```
{
  "layout": "A4 Portrait",
  "outputFormat": "pdf",
  "attributes": {
    "title": "Sample Print",
    "map": {
      "projection": "EPSG:3857",
      "dpi": 72,
      "center": [957352.8034848921, 5936844.1
      "scale": 25000,
      "layers": [
        { "type": "osm", "baseURL": "http://t
      ]
    }
  }
}
```

# MAP WIDGETS

Mouvement de terrain

## Overview map



**Mouvements de terrain**

- Glissement
- Eboulement
- Coulee
- Effondrement
- Erosion des berges

**Cavités souterraines**

- Cave
- Carrière
- Naturelle
- Indéterminée
- Réseau
- Ouvrage Civil
- Ouvrage militaire
- Puits
- souterrain

0 200 600m

1 : 100 000

© IGN, © TELEATLAS, © BRGM

## SUPPORTED GEO-DATA

- Vector
  - GML
  - GeoJSON
  - WFS
- Raster
  - XYZ Tiles (OSM, ...)
  - (Tiled) WMS
  - WMTS
  - GeoTIFF

## WE GOT STYLE!


- Full GeoTools styling with **SLD**
- **MapFish Print 2 JSON styles** (similar to OpenLayers 2 styles)
- **Improved JSON styles**

```
" [INTERSECTS (geometry, buffer (POLYGON (...),  
  "symbolizers": [  
    {  
      "strokeColor": "green",  
      "strokeWidth": 2,  
      "type": "line"  
    }  
  ]  
},
```

Maps are cool.  
But we can do more!



# TABLES

 <p>Volkswirtschafts- und Gesundheitsdirektion Kanton Basel-Landschaft <b>Amt für Geoinformation</b> GIS-Fachstelle Liestal, 07.03.2015 12:20 Uhr</p>	<p><b>AED Standorte</b></p> <p>Auszug aus dem Geoinformationssystem Basel-Landschaft © Kantonale Verwaltung Basel-Landschaft PK, SWISSIMAGE, Geolog. Atlas/Spezialkarten: Quelle swisstopo</p>	
<p>Die aus dem Geoinformationssystem publizierten Daten haben nur informativen Charakter. Aus diesen Daten und deren Darstellung können deshalb keine rechtlichen Ansprüche irgendwelcher Art abgeleitet werden. Auskunft erteilt die GIS-Fachstelle, Tel. 061 552 56 73.</p>		

Zugangsinformation	Einschränkung	Strasse	Hausnummer	PLZ	Gemeinde
Gasthof Schlüssel, WC-Treppe	Während den Öffnungszeiten	Hauptstrasse	29	4153	Reinach
Parterre Gemeindeverwaltung links neben den Liften	nur während den Öffnungszeiten der Gemeindeverwaltung	Hauptstrasse	10	4153	Reinach BL
Meier & Co. AG; AED hängt an Aussenwand links neben dem Eingang	keine	Baselstrasse	5	4144	Arlesheim
im Eingangsbereich links	nachts geschlossen	Domplatz	12	4144	Arlesheim
Im Eingangsbereich	Bei geöffneter Anlage	Landskronstrasse	41	4147	Aesch
Neben Kasse	0900-1900 Mai - September	Dornacherstrasse	85	4147	Aesch
Empfang	Mo., Di. & Fr. 08.00 ? 12.00 Uhr / 13.30 Uhr ? 16.30 Uhr Mi. 07.30 ? 12.00 Uhr / 13.30 Uhr ? 18.00 Uhr Do. 08.00 ? 14.00 Uhr / nachmittags geschlossen	Hauptstrasse	23	4147	Aesch
Direkt auf der linken Seite im Eingangsbereich des Steinackerhauses	Montag, Dienstag, Donnerstag, Freitag in der Regel von 8 - 11.45 h und von 13.30 - 17 h. An den anderen Tagen nur, wenn ein Anlass stattfindet und das Steinackerhaus geöffnet ist.	Herrenweg	14	4147	Aesch

# WHAT IS MORE AWESOME THAN A MAP? MORE MAPS!

## Restaurants

March 09, 2015

Lorem ipsum dolor sit amet, consectetur adipiscing elit. Cras egestas, massa eget placerat fermentum, nunc massa facilisis enim, id eleifend orci lacus sed sem.

## Lake View

Lorem ipsum dolor sit amet, consectetur adipiscing elit. Cras egestas, massa eget placerat fermentum, nunc massa facilisis enim, id eleifend orci lacus sed sem. Donec ultricies rhoncus sem vel suscipit. Nullam fermentum mollis orci, volutpat tristique leo vulputate ut. Sed nisl dolor, auctor quis facilisis in, interdum et leo.



## Chez Jean

Lorem ipsum dolor sit amet, consectetur adipiscing elit. Cras egestas, massa eget placerat fermentum, nunc massa facilisis enim, id eleifend orci lacus sed sem. Donec ultricies rhoncus sem vel suscipit. Nullam fermentum mollis orci, volutpat tristique leo vulputate ut. Sed nisl dolor, auctor quis facilisis in, interdum et leo.



## Little Italy

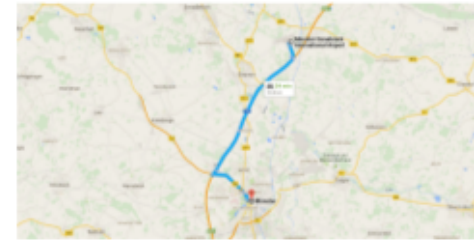
Lorem ipsum dolor sit amet, consectetur adipiscing elit. Cras egestas, massa eget placerat fermentum, nunc massa facilisis enim, id eleifend orci lacus sed sem. Donec ultricies rhoncus sem vel suscipit. Nullam fermentum mollis orci, volutpat tristique leo vulputate ut. Sed nisl dolor, auctor quis facilisis in, interdum et leo.



Google

Drive 25.8 km, 23 min

Directions from Münster Osnabrück International Airport to Münster



o Münster Osnabrück International Airport  
Airportstr. 1, 48268 Gese, Germany

Get on A1

22 km / 14 mi

1. Head west on Hüttener Heide 0.0 km
2. At the roundabout, take the 2nd exit onto Airportallee 40.0 km
3. At the roundabout, take the 2nd exit and stay on Airportallee 1.4 km
4. Turn right to merge onto A1 30.0 km



77 Münster Nord from A1

5. Merge onto A1 16.0 km
6. Take exit 77-Münster Nord to merge onto B54 toward Münster 10.0 km



Continue on B54. Drive to Lütke G.

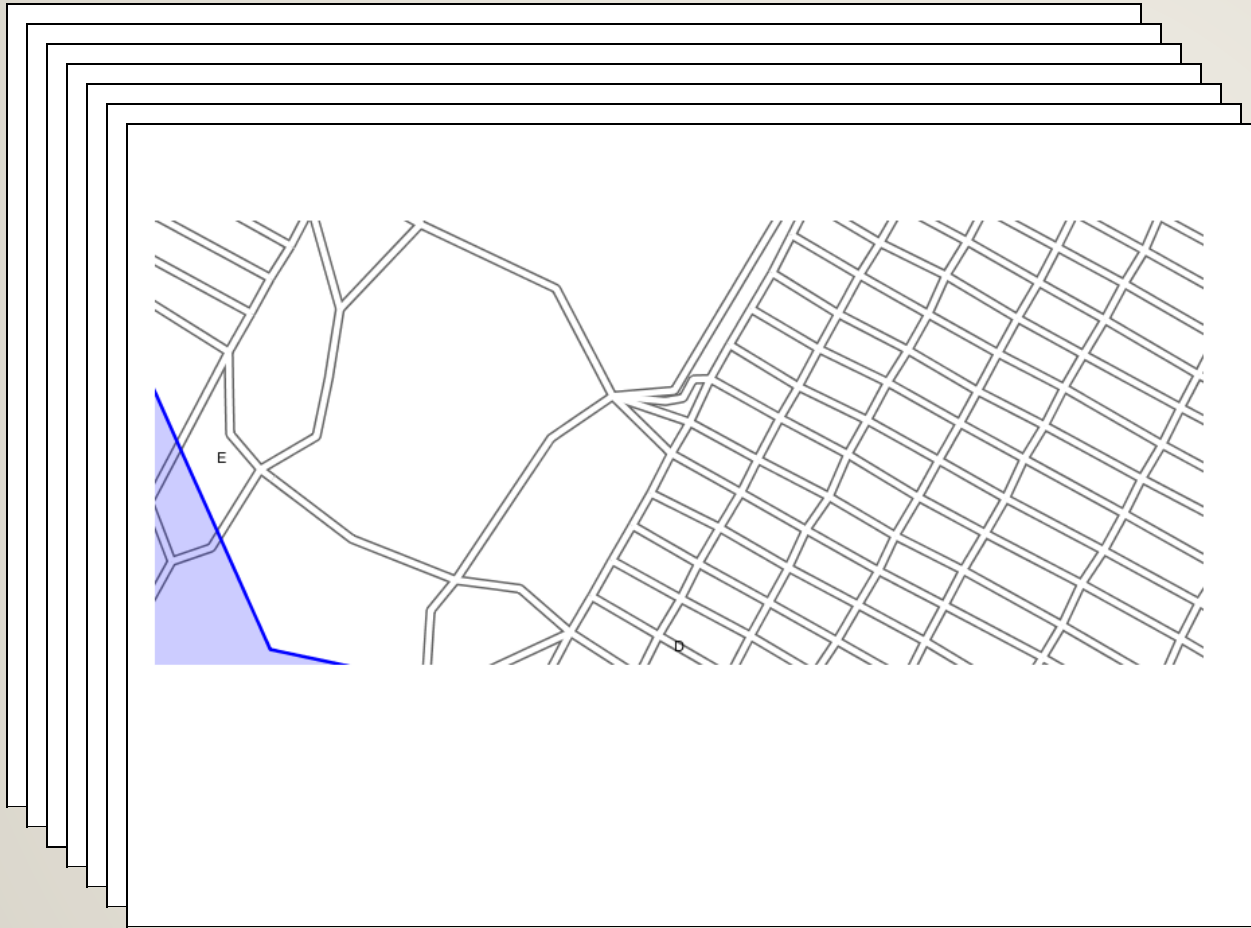
6.2 km / 3.9 mi

7. Merge onto B54 0.0 km
8. Turn left onto Universitätsstraße 26.0 km
9. Continue onto Bispinghof 10.0 km
10. Continue onto Johannisstraße 21.0 km
11. Turn left onto Lütke G. 10.0 km

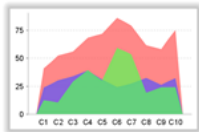


o Münster  
Germany

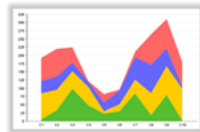
# MULTI-PAGE MAPS



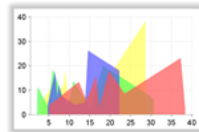
# CHARTS



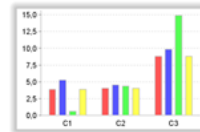
Area Chart



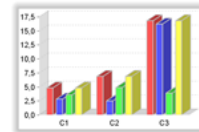
Stacked Area



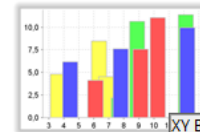
XY Area



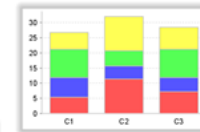
Bar Chart



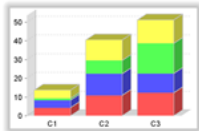
Bar3D Chart



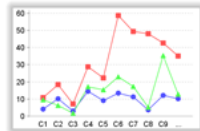
XY Bar



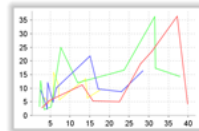
Stacked Bar



Stacked Bar 3D



Line Chart



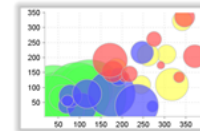
XY Line



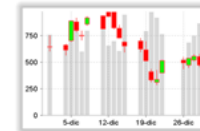
Pie Chart



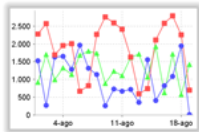
Pie3D Chart



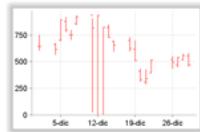
Bubble Chart



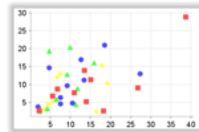
Candlestick Chart



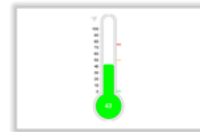
TimeSeries Chart



HighLow Chart



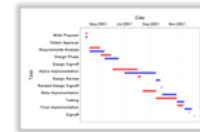
Scatter Chart



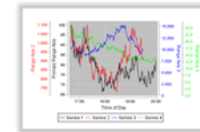
Thermometer Chart



Meter Chart

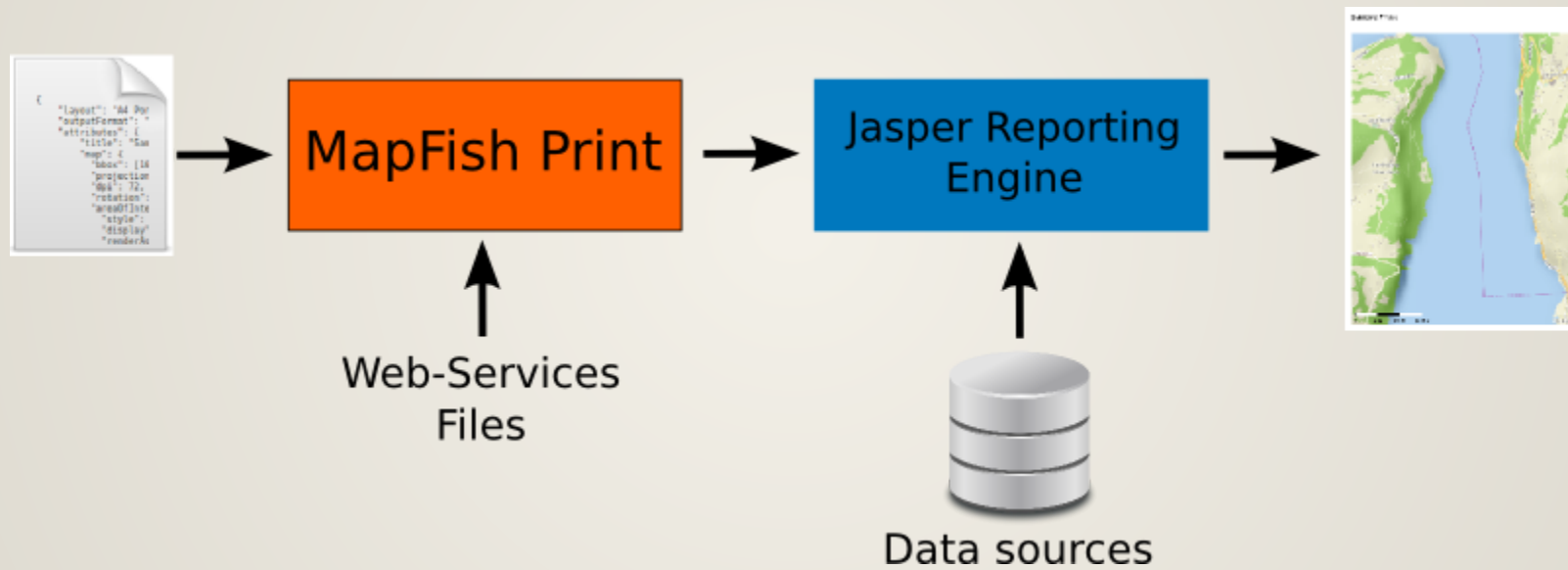


Gantt



MultiAxis Chart

# EXTERNAL DATASOURCES



# CLIENT SIDE SUPPORT

CGXP Plugin: [cgxp.plugins.Print](http://cgxp.plugins.Print)

The screenshot displays the GeoView BL web application interface. The main map area shows a topographic map of a region in Switzerland, with a large orange-shaded polygon highlighting a specific area. The map includes various geographical features like roads, rivers, and elevation contours. The interface includes a sidebar on the left with the following elements:

- Themen:** A dropdown menu with a plus sign.
- Drucken:** A dropdown menu with a minus sign.
- Titel:** A text input field containing "AED Standorte".
- Kommentar:** A text area with the placeholder "Kommentar auf der Karte".
- Legende anzeigen:** A checkbox that is currently unchecked.
- Layout:** A dropdown menu set to "A4 Hochformat".
- Masstab:** A dropdown menu set to "1:25,000".
- Rotation:** A text input field containing "22".

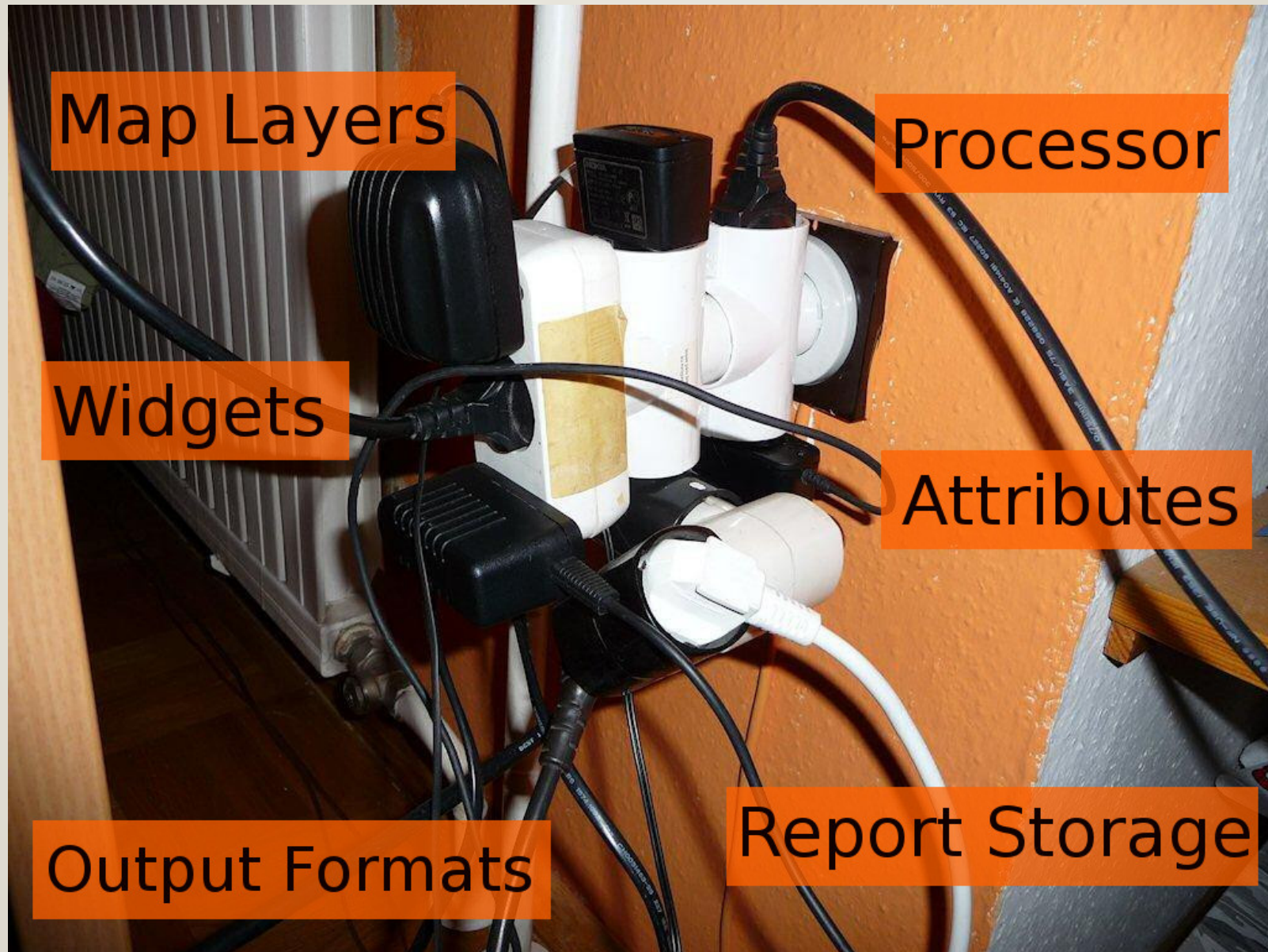
At the bottom of the sidebar, there are buttons for "Export in PNG" and "Drucken".

The main map area has a search bar at the top with the text "Suche Ort, Objekte...". Below the search bar, there are navigation controls and a scale bar showing "1000 m". The map is titled "AED Standorte" and has a scale of "1:75000".

At the bottom right of the map, there is a "KML hinzufügen" button.

The top right corner of the application shows the following information: "PK | SWISSIMAGE | Geolog. Atlas/Spezialkarten | Quelle swisstopo", "GIS-Fachstelle BL | Mühlemattstrasse 36 | CH-4410 Liestal", and a small red ribbon icon.

# PLUGGABLE ARCHITECTURE



## **BACKWARDS COMPATIBILITY**

- Completely new configuration
- Compatibility API for legacy clients



## MAPFISH PRINT 3

MapFish Print on GitHub:  
[github.com/mapfish/mapfish-print](https://github.com/mapfish/mapfish-print)

This presentation on GitHub:  
[github.com/tsauerwein/talks\\_fossgis2015](https://github.com/tsauerwein/talks_fossgis2015)

Me on GitHub/Twitter:  
@tsauerwein



to camp 

camp**to**camp INNOVATIVE SOLUTIONS  
BY OPEN SOURCE EXPERTS